

**SOL PEDAL BINS**

- Virgin HDPE
- Various Colours
- Usually Ex Stock



**120L and 240L PEDAL BINS**

- Virgin HDPE
- Various Colours
- Usually Ex Stock

**120L, 240L and 360L**

- Virgin HDPE
- Various Colours
- Usually Ex Stock



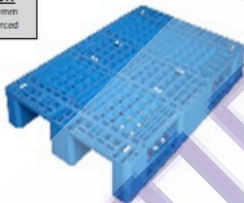
**SPILL PALLETS**

- 1300 x 1300 x 160mm
- 1300 x 1300 x 270mm



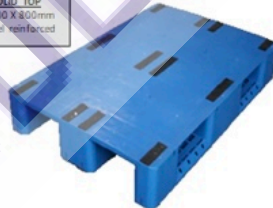
**EURO HEAVY DUTY**

- 1200 x 800mm
- Steel reinforced



**EURO SOLID TOP**

- 1200 x 800mm
- Steel reinforced



**STD HEAVY DUTY**

- 1200 x 1000mm
- Steel reinforced



**BULK BINS**

- 500 & 1000kg
- Perforated or Solid
- Optional Extras
- Castors
- Lids.
- Liquid Nozzles



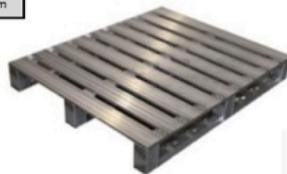
**HYGIENIC/PHARMACEUTICAL**

- 1200 x 1000mm
- Easily washable



**ALUMINIUM 3 SKID**

- 1200 x 1000mm



### Wheelie Bin 240L



<b>Model</b>	<b>240L Wheelie Bin</b>
Capacity	240L
Material	100% Virgin HDPE-UV Stabilized
Overall Height	1000mm
Overall Length	720mm
Overall Width	580mm
Depth	895mm
Weight	10.5kg
Wheels	2x 200mm Rubber Wheels

Available Colours

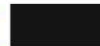


### Wheelie Bin 240L – Recycled Black



<b>Model</b>	<b>Recycled Black (0283)</b>
Capacity	240L
Material	Recycled
Overall Height	1055mm
Overall Length	720mm
Overall Width	580mm
Weight	12kg
Wheels	2x 180mm Rubber Wheels

Available Colours



### Wheelie Bin 660 L



<b>Model</b>	<b>660L</b>
Capacity	660L
Overall Length	1280 mm
Overall Width	740 mm
Overall Height	1120 mm
Weight	35 Kg

Available Colours





<b>Model</b>	<b>60L Utility Bin (0144)</b>
Capacity	60L
Diameter	450mm
Height	570mm
Weight	2kg



60L Pedal Bin



<b>Model</b>	<b>60L Pedal Bin</b>
Capacity	60L
Material	100% Virgin HDPE-UV Stabilized
Overall Height	600mm
Overall Length	520mm
Overall Width	430mm
Weight	

Available Colours



Wheelie Bin 120L



<b>Model</b>	<b>120L Wheelie Bin</b>
Capacity	120L
Material	100% Virgin HDPE-UV Stabilized
Overall Height	950mm
Overall Length	550mm
Overall Width	465mm
Depth	865mm
Weight	9kg
Wheels	2x 200mm Rubber Wheels

Available Colours

